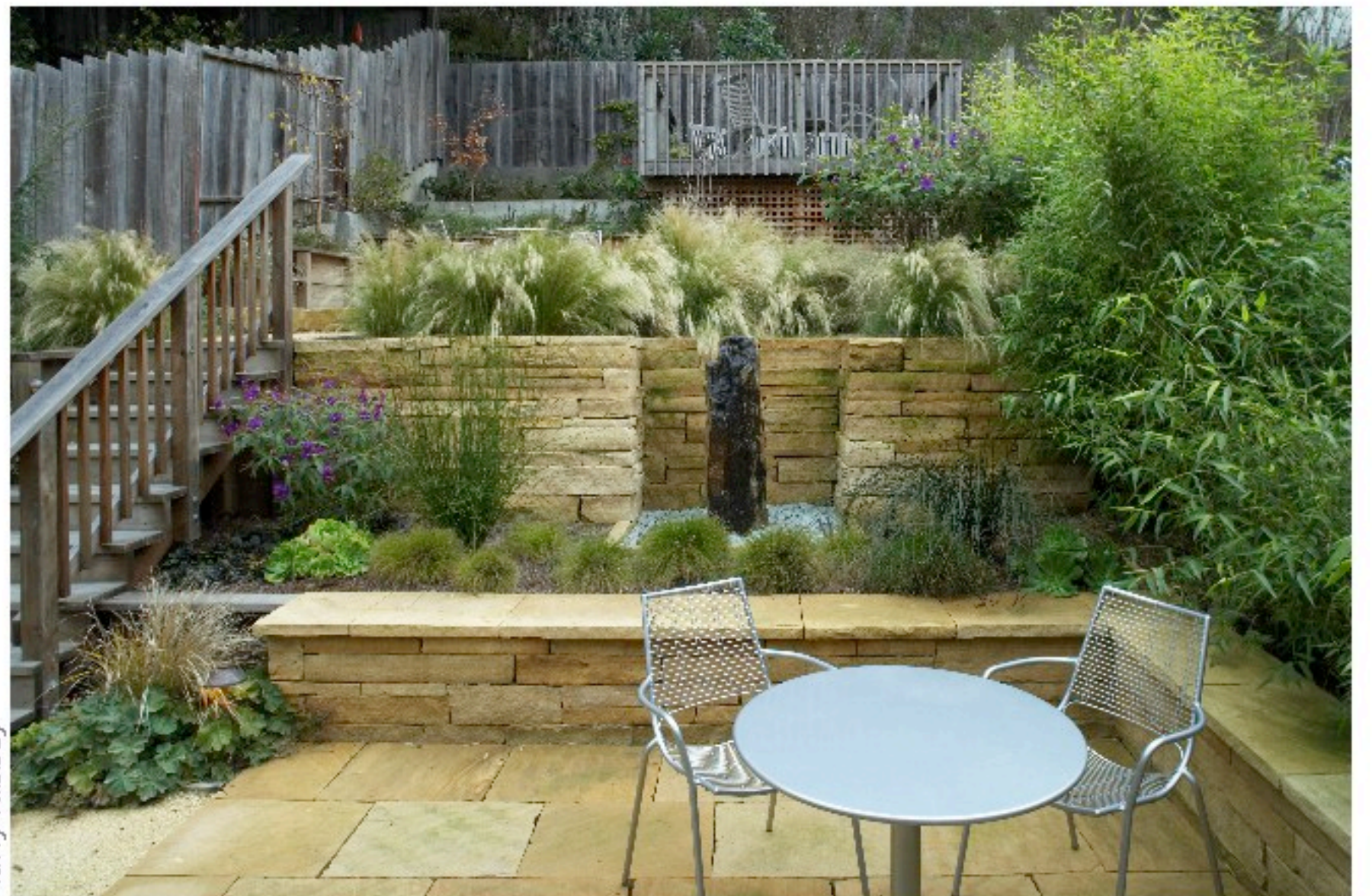




MICHAEL MULLIN
ARCHITECT

527 Diamond
San Francisco, California

before



Muffy Kibbey



MICHAEL MULLIN
ARCHITECT

527 Diamond
San Francisco, California



Built-in cabinetry throughout the house recalls the warmth of Craftsman styling, with modern simplicity and functionality.

The kitchen opens to the dining room (foreground) and to the back terrace.



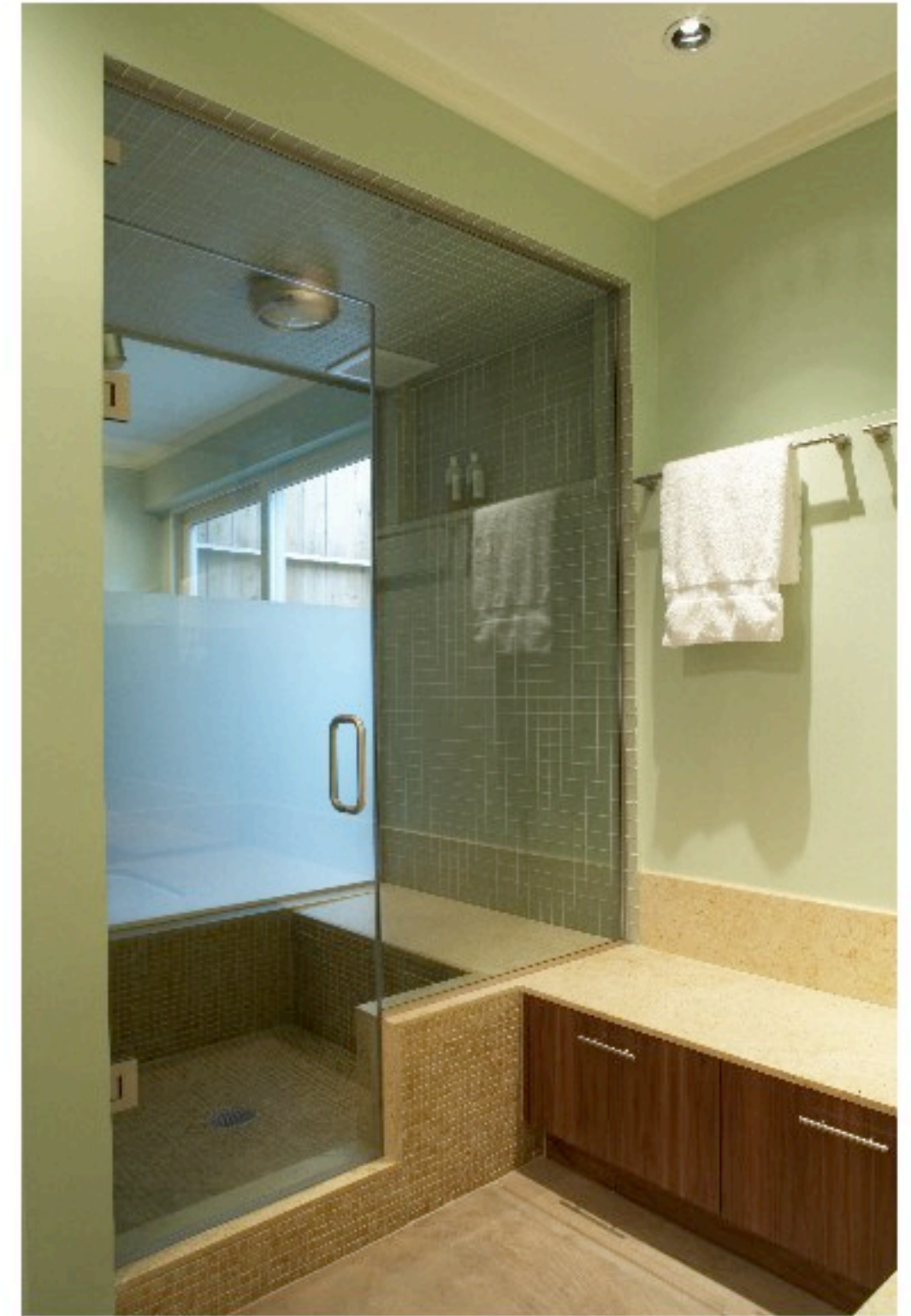


MICHAEL MULLIN
ARCHITECT

527 Diamond
San Francisco, California

The vanity in the spa (right) is echoed by a matching built-in dresser in the bedroom (photo below).

A limestone bench (far right) wraps around the spa, continuing from inside the shower, over dry cabinets, and around the tub (photo below).



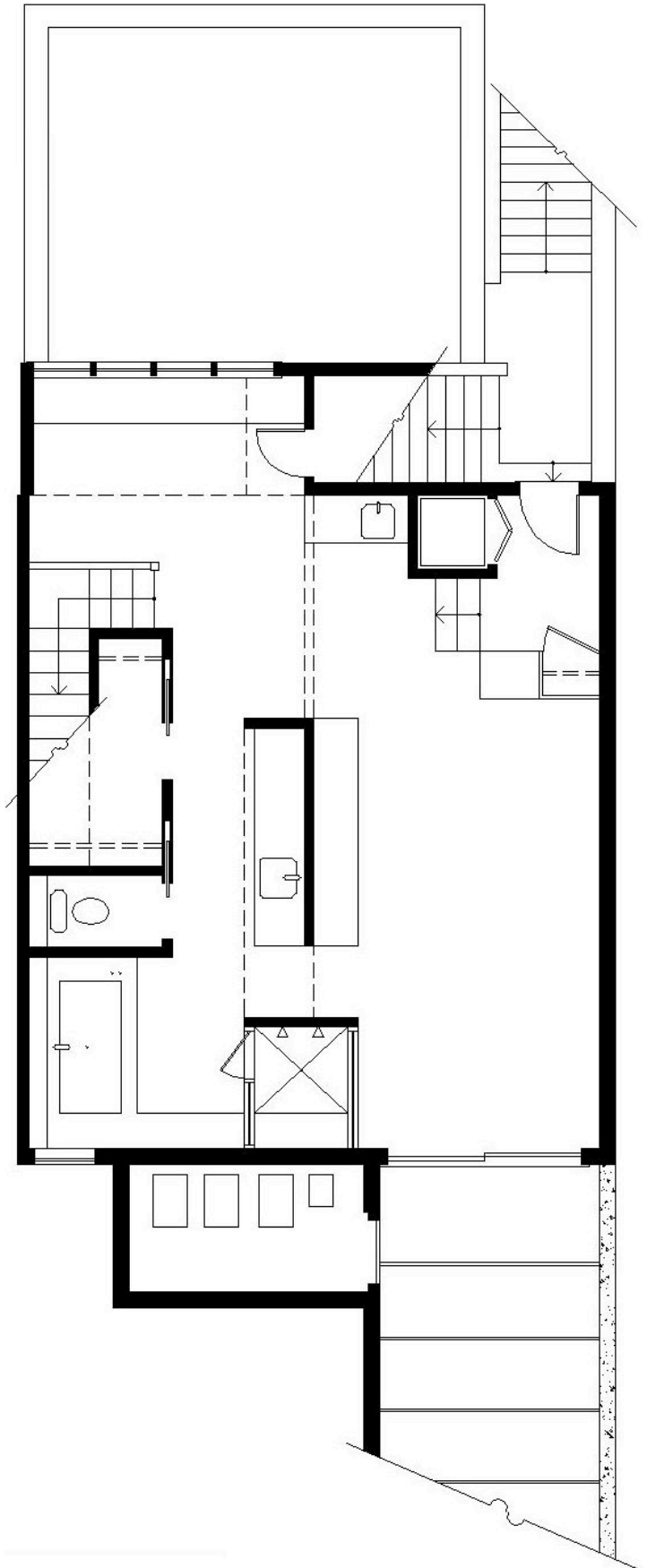
Partly translucent glass allows light from the bedroom into the shower and spa.



Muffy Kibbey



MICHAEL MULLIN
ARCHITECT



527 DIAMOND ST.
SAN FRANCISCO

FIRST FLOOR PLAN

